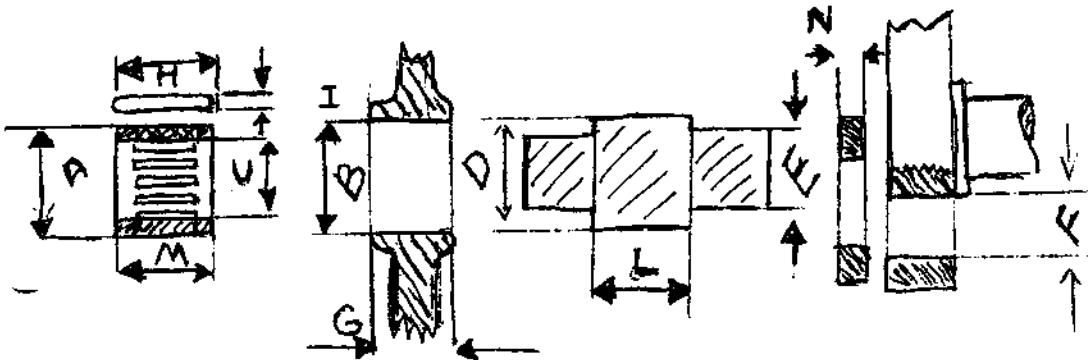


Table No. 15

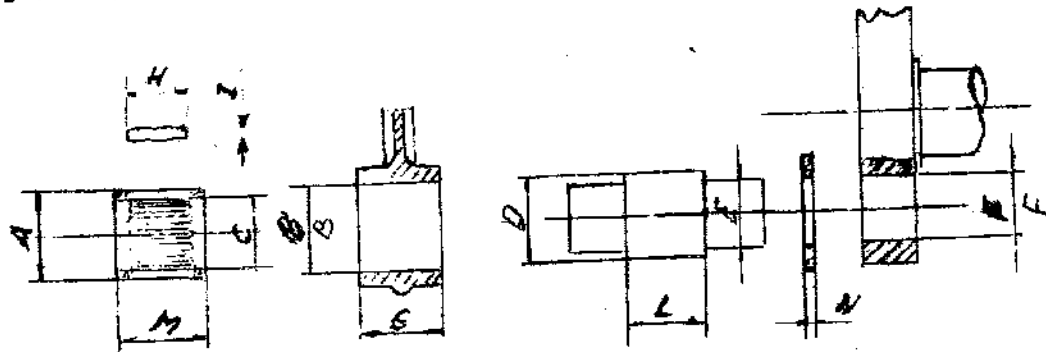
Principal data of the roller - rod system



B roller cradle diameter	specified wear limit	1,6029" & 1,603"	1,6023"
D pin diameter	specified wear limit	1,3659" & 1,3661"	1,3649"
I-rollers diameter	specified selection wear limit	0,1179" & 0,1181"	0,000078" 0,1180"
Diametral play (obtained by coupling) B-D & 2I	specified wear limit		0,000590" 0,0015"
Inside diameter of the cage	specified wear limit	1,366" & 1,367"	1,354"
Inside diameter of the cage A	specified wear limit	1,580" & 1,582"	1,5744"
MC cage height		0,809" & 0,812"	
Shims thickness		0,0576" & 0,0602"	
L pin length		0,950" & 0,952"	
Axial play of the conn-rod big end L-G & 2N :	specified wear limit	0,00551" & 0,0157"	0,0236"
H Length			0,622"
G Conn-rod big-end height:	specified wear limit	0,821" & 0,824"	0,810"
E pin keying diameter		1,144" & 1,145"	
F keying holes diameter		1,1417" & 1,142"	
suggested assembly E-F interference			0,00314"

TABLE No. 15

Principal data of the roller - rod system



B roller cradle diameter specified	mm	40,715 + 40,720
wear limit	mm	40,700
D pin diameter specified	mm	34,695 + 34,700
wear limit	mm	34,670
I - rollers diameters	mm	2,995 + 3,000
(selection	mm	0,002)
wear limit	mm	2,998
Diametral play (obtained by coupling) B - D + 21	mm	0,015
specified	mm	0,040
wear limit		
Inside diameter of the cage specified	mm	34,71 + 34,73
wear limit	mm	34,65
Inside diameter of the cage A specified	mm	40,15 + 40,20
wear limit	mm	40,00
M cage height	mm	20,55 + 20,65
Shims thickness no. N	mm	1,47 + 1,53
L pin length	mm	24,15 + 24,20
Axial play of the conn-rod big end L-G + 2N: specified	mm	0,14 + 0,40
wear limit	mm	0,60
H length	mm	15,8
G conn-rod big/end height : specified	mm	20,86 + 20,95
wear limit	mm	20,60
E pin keying diameter	mm	29,08 + 29,09
F keying holes diameter	mm	29,00 + 29,013
suggested assembly E-F interference	mm	0,08

34a